

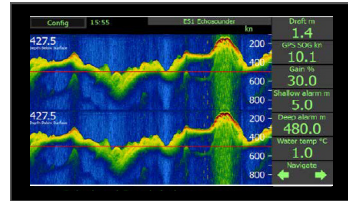
## Specifications

<b>Channels</b>	Dual channel echo sounder
<b>Transducer connectors:</b>	2 Transducer connectors in Electronic / transceiver unit.
<b>Frequencies</b>	8 set frequencies 24,30, 33, 38, 50, 100, 200, 210 kHz
<b>Power Supply</b>	DC: 20 - 32 V and/or 115/230VAC
<b>Power Consumption</b>	Display unit. Nominal 6W Electronic unit 20W
<b>Display ESN200-SB</b>	9" Resistive touch. 400NITS Dimensions: 249 x 155mm Weight:1.1kg 1 x LAN 3 x NMEA 0183 Outputs (IEC61192-1) 2 x NMEA 0183 Inputs (IEC61192-1)
<b>Electronic unit JB70E2-SA</b>	Dimension: 115x115x180mm Weight:1.5kg 2 x LAN (IEC61192-450) 5 x NMEA 0183 Outputs (IEC61192-1) 3 x NMEA 0183 Inputs (IEC61192-1) 1 x AUX in 2 x AUX out 1 x Relay out
<b>Ranges</b>	Selectable from 0 - 5 m to 0 - 5000 m
<b>Approved transducers with expected depth limits</b>	50/200kHz ETS50200T/G 1.5-450m 200kHz ETN200T: 1,5 - 300m 200kHz ETN200ST/G: 1,5 - 200m 50kHz ETN050T/G: 2 - 450m 38kHz ETN038T/G:2 - 1000**
<b>Measuring Accuracy</b>	2-20m: Accuracy<0.5m Resolution=0.1m 20-200m: Accuracy<5m Resolution=1m
<b>Output power</b>	Nominal 700W. Max >1000W
<b>User functions</b>	Auto mode (for all settings) Manual control: Gain, Power, TVG, Frequency Transducer setup by part number Diagnostic screens / BIT Dimming (remote or local)
<b>Print/Archive function</b>	Printers: By use of EPSON 350*, OKI 280Elite*, Network printers / Review: Service software via LAN Extended Internal Logging, by USB or SD*
<b>Depth alarms</b>	BAM compatible (IEC62923) ALF or ALR. Internal sounder. Relay output and AUX in/out
<b>Options</b>	IR31Dim Remote/Automatic dimming unit CD401MR-SB Multi-repeater ESN200-SB Extra Displays
<b>Classification</b>	MED B approved

\*\* Ranges are preliminary

## Overview

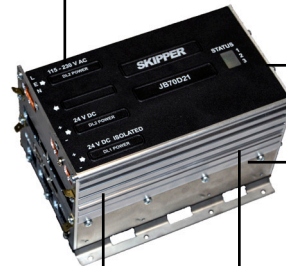
Display unit ESN200-SB



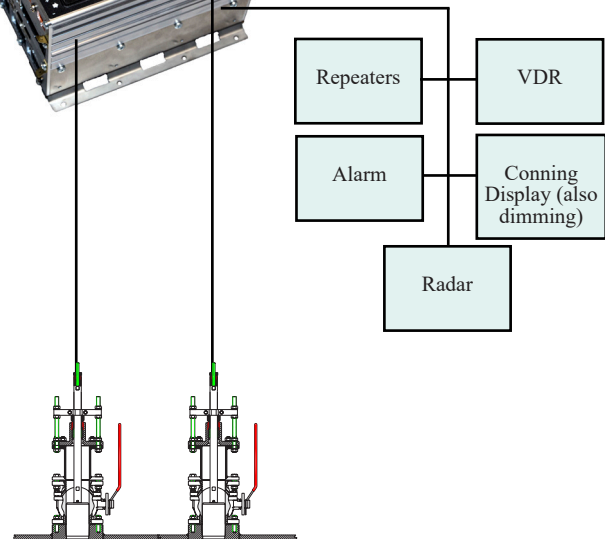
24 V DC

LAN communication with Display  
(Multiple displays available)

Electronic / Transceiver unit  
JB70E2-SA



24 V DC - 115/230VAC



Options for tank,  
sea valve (single and double hull)  
and retrofit.

